


# PRODUCT SHEET

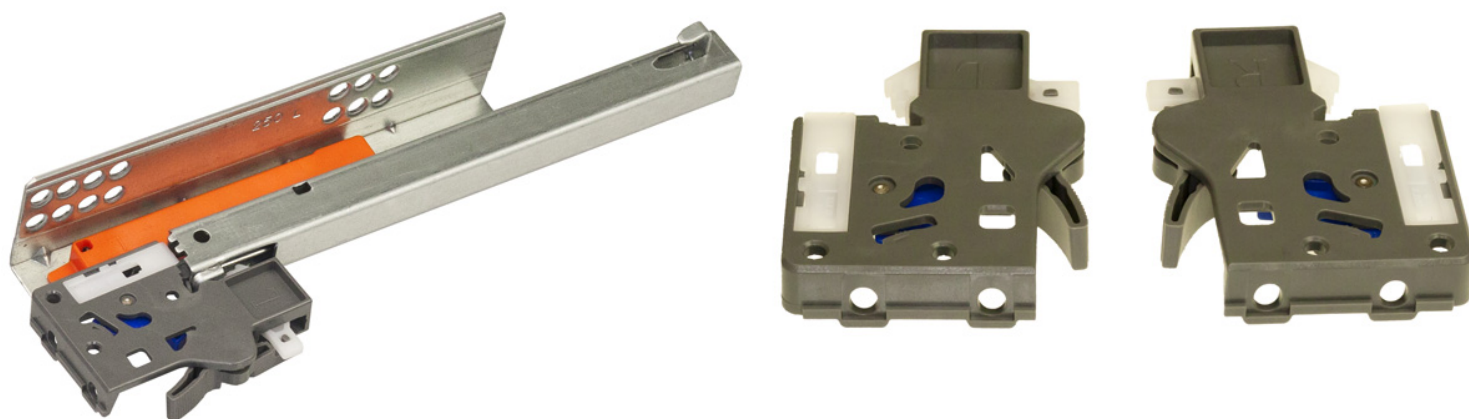
## Description:

Invisible Semi Extension PTO, 400mm, Pre-Zinc, W/Quick Release Handles, Max Drawer Width:500mm, Load Capacity:25Kg

## Item number:

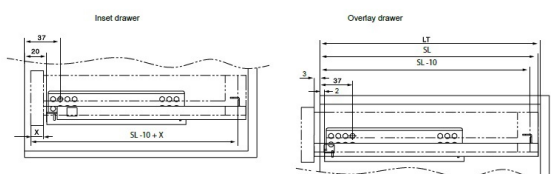
16.13.428-0

Units	Box	Carton	HS Code	Barcode
Pair	1	10	8302420090	
				5704866064385

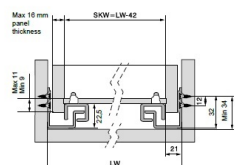


### Installation dimensions

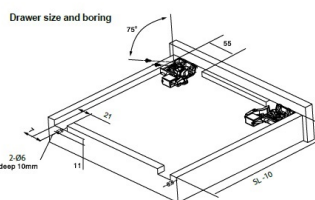
SL= Slide length LT= Internal cabinet depth Inset drawer LT min=SL+21 Overlay drawer LT min=SL+3



Slide length	250 mm	300 mm	350 mm	400 mm	450 mm	500 mm	550 mm
Item No.	16.13.425	16.13.426	16.13.427	16.13.428	16.13.429	16.13.430	16.13.431

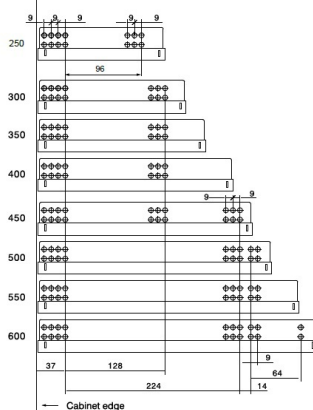


### Drawer size and boring

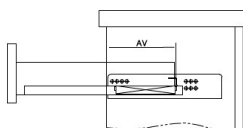


SL (mm)	250	300	350	400	450	500	550	600
AV (mm)	98,5	98,5	98,5	118,5	118,5	118,5	138,5	138,5

### Hole pattern



### Extension loss



## SISO A/S

Mileparken 11  
DK-2740 Skovlunde  
Denmark  
VAT: DK 24786013

Phone +45 45 830 900

www.siso.dk  
siso@siso.dk

Danske Bank  
Nytrov Branch  
Copenhagen  
SWIFT: DABADKKK

Account no.  
4180 3112 112936  
IBAN Account  
DK7230003112112936